

**Saturday, September 24, 2016 (Continued)**

- 10:40-12:00 p.m. **Session V \*\* Chair: Laurent Coscoy**
- 10:40-11:00 a.m. **Dean Sheppard (UCSF)**  
*Loss of integrin  $\alpha$ v $\beta$ 8-TGF $\beta$  signaling to microglia causes progressive neuroanatomic and neuromotor abnormalities resembling cerebral palsy*
- 11:00-11:20 a.m. **Nilabh Shastri (UCB)**  
*Unexpected connections between antigen presentation pathway and metabolic disease*
- 11:20-11:40 a.m. **Anna Molofsky (UCSF)**  
*Interleukin-33 regulates microglial activation and synapse pruning during brain development*
- 11:40-12:00 p.m. **Matthew Spitzer (UCSF)**  
*Modeling system-wide immune responses in health and cancer*
- 12:00-1:30 p.m. **BBQ Lunch (Outside)**
- 1:30-6:00 p.m. **FREE AFTERNOON**
- 6:00-7:00 p.m. **Dinner -Crocker Dining Hall**
- 
- 7:00-7:45 p.m. **Session VI \*\* Chair: Michael Rosenblum**
- 7:00-7:05 p.m. **Announce poster prizes**
- 7:05-7:25 p.m. **Thornton Thompson (Raulet Lab/UCB)**  
*Anti-tumor NK responses mitigated by endogenous expression of NK activating ligands*
- 7:25-7:45 p.m. **Erick Lu (Cyster Lab/UCSF)**  
*Control of steady-state and activated dendritic cell positioning by EB12*
- 7:45-8:00 p.m. **Beer, wine, snack break**
- 
- 8:00-9:00 p.m. **Invited Speaker \*\* Introduction by Greg Barton**
- Dr. Ruslan Medzhitov**  
**Howard Hughes Medical Institute, Yale School of Medicine**  
*Inflammation, metabolism and disease*
- 9:00-9:30 p.m. **Beer, wine, snack break**
- 
- 9:30 p.m. **Bonfire On The Beach**
- 

**Sunday, September 25, 2016**

7:30-9:00 am **Breakfast**

**Conference Adjourns**

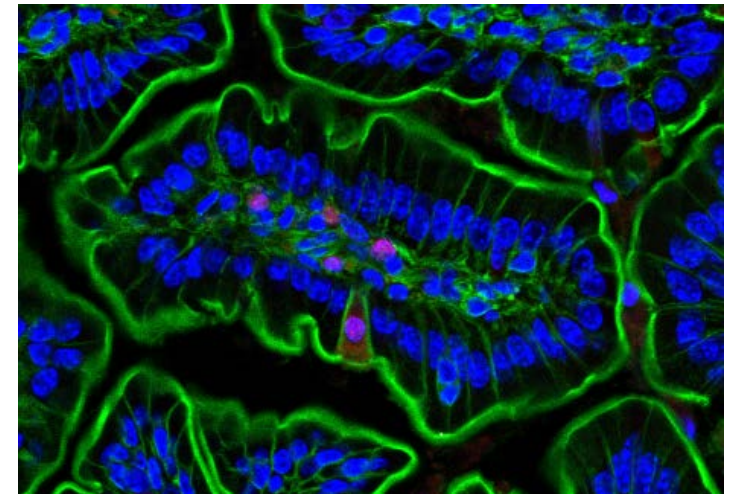
11:00 am **CHECKOUT**

# UCSF/UCB Immunology Retreat

## 2016

### Asilomar Conference Grounds

800 Asilomar Avenue  
Pacific Grove, California 93950  
September 23 - 25, 2016



*A pyroptosing intestinal epithelial cell is being expelled from the monolayer by its neighboring cells, which are rearranging their actin cytoskeleton for this purpose*

*Photo by Isabella Rauch and Katie Deets (Vance Lab, UCB)*

**Front Desk:** (831) 372-8016

**Fax:** (831) 372-7227

**Check-In:** Friday, September 23<sup>rd</sup>, 4-6 p.m.

**Check-Out:** Sunday, September 25<sup>th</sup>, 11 a.m.

**Friday, September 23, 2016**

12:00-1:00 p.m. Lunch boxes available in Merrill Hall

1:00-2:50 p.m. **Session I \*\* Chair: Ari Molofsky**

1:00-1:10 p.m. **Welcome**

1:10-1:30 p.m. **Adrian Eriebacher (UCSF)**  
*Immunology of the maternal-fetal interface*

1:30-1:50 p.m. **Hilde Schjerven (UCSF)**  
*Ikaros and its zinc fingers: (Another) guardian of B-cell development*

1:50-2:10 p.m. **Benjamin Obadia (Ludington Lab/UCB)**  
*Invasion dynamics of the drosophila gut microbiota*

2:10-2:30 p.m. **Marina Sirota (UCSF)**  
*Leveraging big data in immunology*

2:30-2:50 p.m. **Darienne Myers (Roose Lab/UCSF)**  
*Dynamic tuning of naïve CD4+ T cells through tonic signaling*

2:50-3:20 p.m. **Break**

---

3:20-5:00 p.m. **Session II \*\* Chair: Russell Vance**

3:20-3:40 p.m. **Kelly Remedios (Rosenblum Lab/UCSF)**  
*The CD27 pathway sets the Th17 axis in tissues*

3:40-4:00 p.m. **Allyson Spence (Tang Lab/UCSF)**  
*Revealing the specificity of regulatory T cells in autoimmune diabetes*

4:00-4:20 p.m. **Tiffany Scharschmidt (UCSF)**  
*Elucidating mechanisms that promote immune tolerance to skin commensals early in life*

4:20-4:40 p.m. **Ari Molofsky (UCSF)**  
*Defining the adipose tissue of ILC2 niche*

4:40-5:00 p.m. **Greg Timblin (Saijo Lab/UCB)**  
*Estrogen metabolites inhibit macrophage ROS production to restrict inflammation and maintain metabolic homeostasis*

5:00-6:00 p.m. **Registration/Check-In**

6:00-7:00 p.m. **Dinner – Crocker Dining Hall**

7:00-8:20 p.m. **Session III \*\* Chair: Trevor Burt**

7:00-7:20 pm **Nadia Kurd (Robey Lab/UCB)**  
*Factors that influence autoreactive thymocyte fate*

7:20-7:40 p.m. **Robin Kageyama (Ansel Lab/UCSF)**  
*High throughput identification of microRNA target sites active in CD4 T cell differentiation*

7:40-8:00 p.m. **Geoff Smith (Weiss Lab/UCSF)**  
*Temporal dissection of IL-2 signaling in T cells*

8:00-8:20 p.m. **Dan Portnoy (UCB)**  
*Innate immunity of listeria monocytogenes: Implications for other intracellular pathogens and cancer immunotherapy*

8:20 – Midnight **Poster session: Please keep posters up until Saturday evening**

---

**Saturday, September 24, 2016**

7:30-9:00 a.m. **Breakfast – Crocker Dining Hall**

9:00-10:20 a.m. **Session IV \*\* Chair: Mark Ansel**

9:00-9:20 a.m. **Michael Kattah (Ma Lab/UCSF)**  
*A20 and ABIN maintain intestinal epithelial survival*

9:20-9:40 a.m. **Bo Liu (Barton Lab/UCB)**  
*The trafficking chaperone Unc93b1 maintains immunological tolerance of Toll-like receptors*

9:40-10:00 a.m. **Trevor Burt (UCSF)**  
*Understanding the diversity and function of human fetal T cells*

10:00-10:20 a.m. **Isabella Rauch (Vance Lab/UCB)**  
*A coordinated cell-intrinsic response of intestinal epithelial cells orchestrated by Caspase-1/8 inflammasome activation in vivo*

10:20-10:40 a.m. **Break**